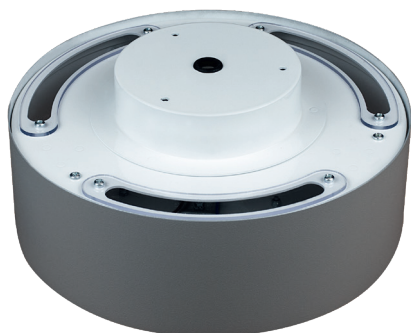
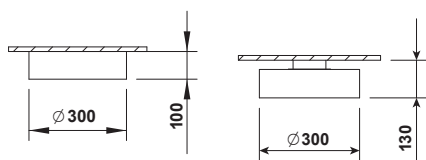


PLAFO 300 LED



Index no.	Lumen output [lm]	Power [W]	Colour temp. [K]	CRI	Lifetime [H]	Warranty [Years]	MacAdam [SDCM]	Weight [kg]
SURFACE MOUNTED								
3512.2500/830	2500	21	3000	Ra > 80	50.000	5	3	3,00
3512.2500/840	2500	21	4000	Ra > 80	50.000	5	3	3,00
SURFACE UP/DN								
6581.UD.2500/830	2500	21	3000	Ra > 80	50.000	5	3	3,00
6581.UD.2500/840	2500	21	4000	Ra > 80	50.000	5	3	3,00



Direct/indirect version - Index no. 6581.UD

Surface mounted LED luminaire.

Mounting:	Directly on the ceiling
Body material:	Steel and aluminium
Colour:	Standard Gray RAL 9006, other RAL colours on request (please add RAL colour after index number)
LED module:	Osram or Tridonic LED module included
Colour temperature:	3000K or 4000K
Colour Rendering Index (CRI)	>80 in standard
Driver:	Electronic integrated driver in standard, DALI on request
Emergency unit:	N/A
Movement sensor:	N/A
Daylight control sensor:	N/A
Operating temperature range:	0°C ... +40°C
IP Class:	IP20 in standard, IP44 on request
Power:	220-240V 50/60Hz
Lighting direction:	Direct lighting - index 3512, direct / indirect lighting - index 6581.UD
Reflector type:	Aluminium white
Light distribution:	Symmetric
Diffuser:	White acrylic diffuser [WD] in standard, acrylic frosted [AC], microprismatic [MPR] or any other on request.
General data:	5 Years standard warranty
	Different lumen output or wattage available on request
	All other technical features such as : Luminaire Efficacy, LOR, Lumen maintenance L/B etc. available in our pricelist
	Wattage of products may vary due to constant LED efficacy improvements. Luminous flux & Luminaire Power tolerance +/- 10%.
	System power consumption (LED module & driver) depends on components used